

**Diversity, distribution, habitat preferences and community assemblages of
Amphibians and Reptiles in the “Cilento, Vallo di Diano and Alburni”
National Park (Campania, Southern Italy).**

ANTONIO ROMANO^{1*}, LUIGI SANSONE¹, ALFIO CACACE² & DINO BIANCOLINI¹

¹ *Consiglio Nazionale delle Ricerche- Istituto per la BioEconomia, Via dei Taurini, 19 -
00100 Roma (RM) – Italy*

² *Via Pagliarelle, 15 - 80059 Torre del greco (NA) - Italy*

**Corresponding author: antonioromano71@gmail.com; antonio.romano@ibe.cnr.it*

SUPPLEMENTARY MATERIAL

Figure S1. Altimetric ranges in the “Cilento, Vallo di Diano e Alburni” National Park. Grid is 5x5 km UTM .

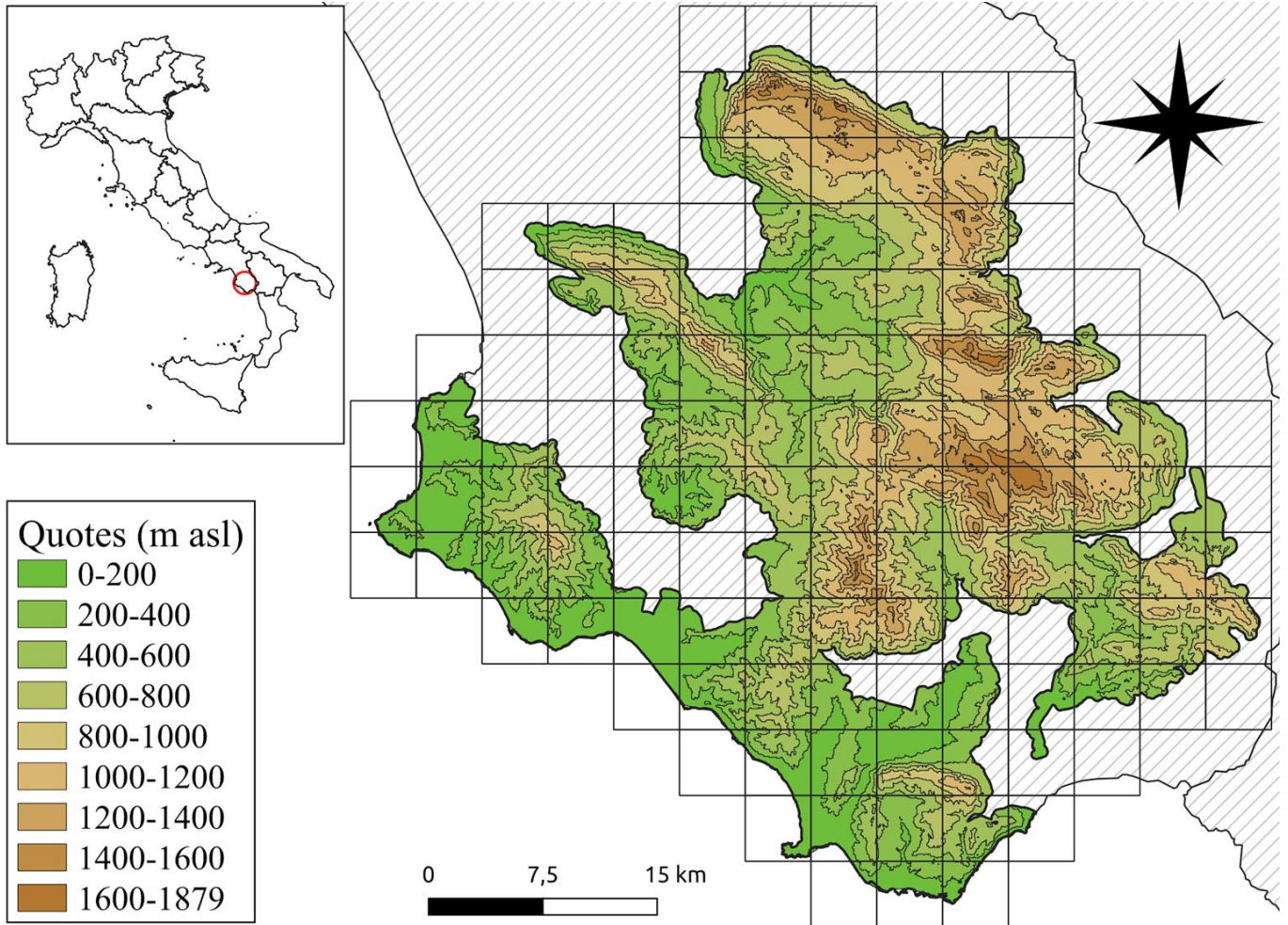
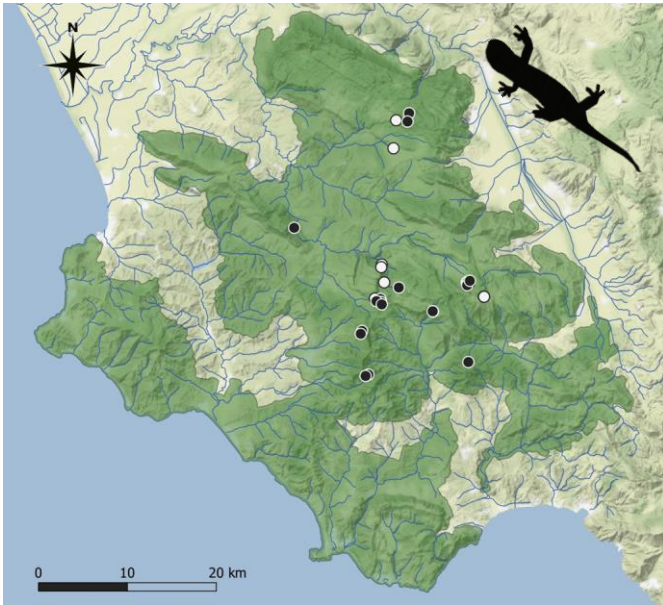
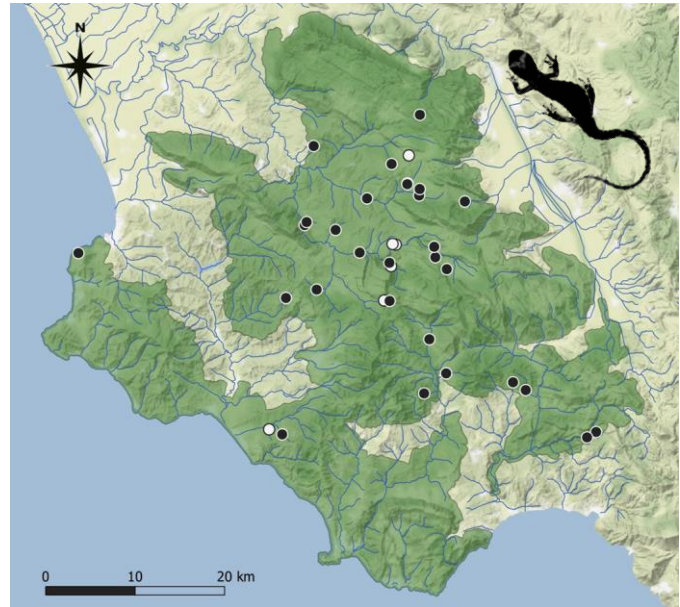


Figure S2. Distribution of amphibians and reptiles in the “Cilento, Vallo di Diano e Alburni” National Park. White dots = records until year 2000; black dots: records post 2000.

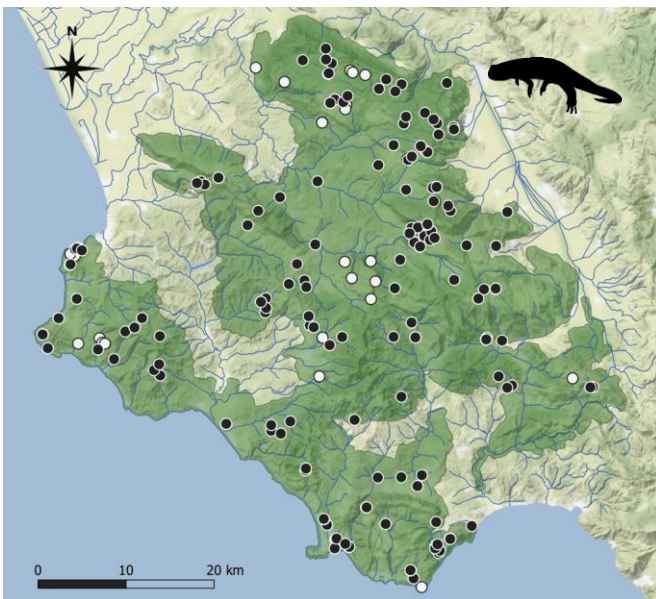
AMPHIBIA: salamanders and newts



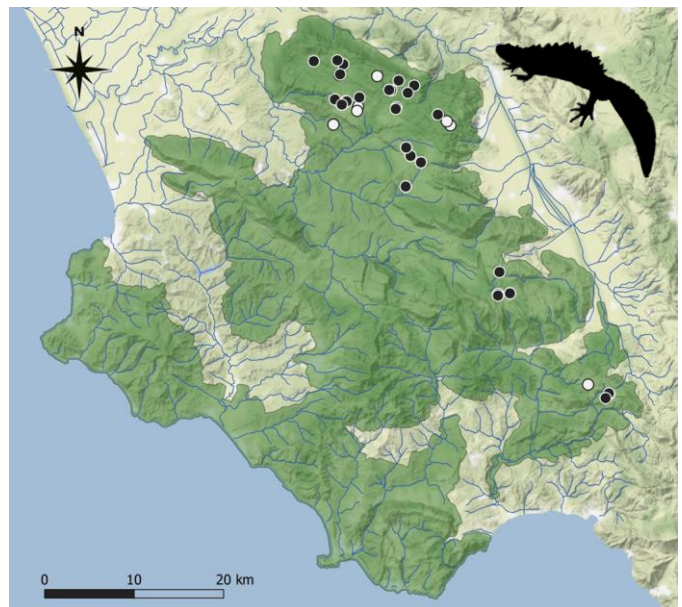
Salamandra salamandra



Salamandrina terdigitata



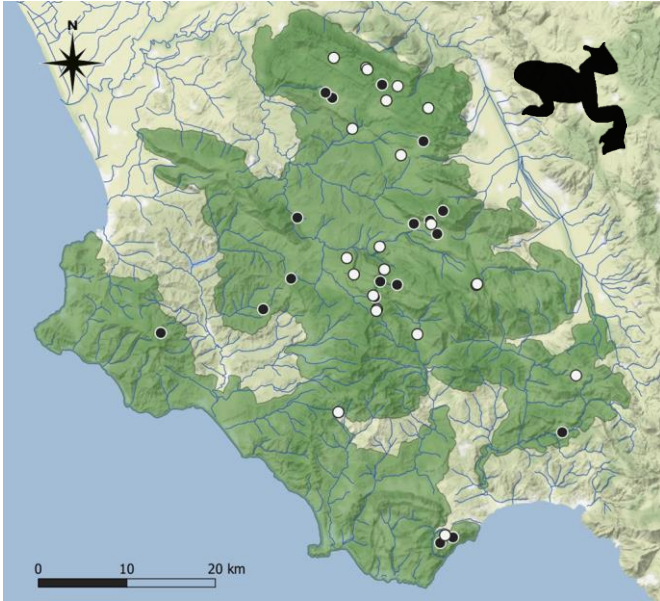
Lissotriton italicus



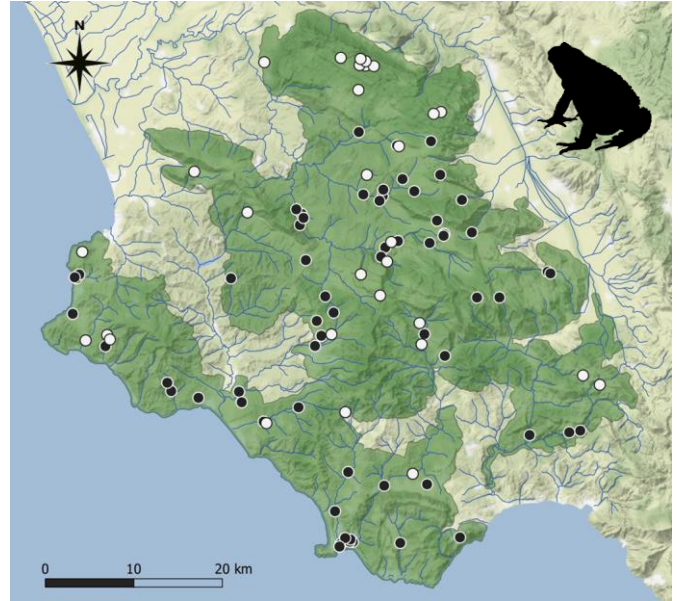
Triturus carnifex

Figure S2. Distribution of amphibians and reptiles in the “Cilento, Vallo di Diano e Alburni” National Park. White dots = records until year 2000; black dots: records post 2000.

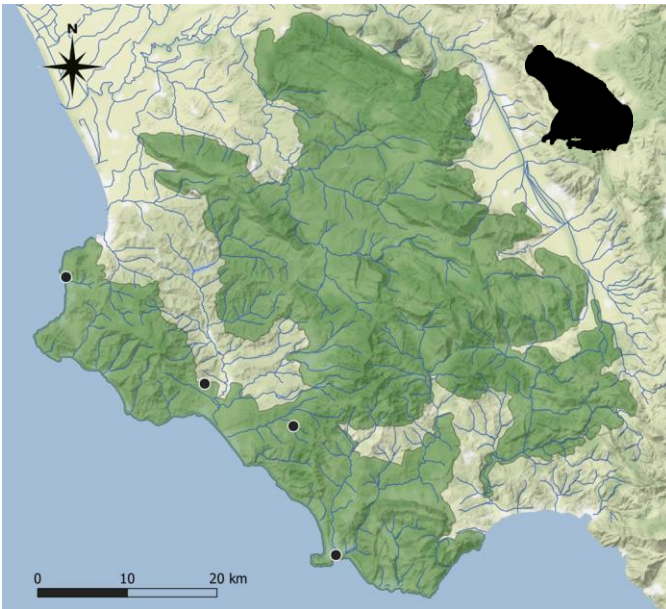
AMPHIBIA: toads and treefrogs



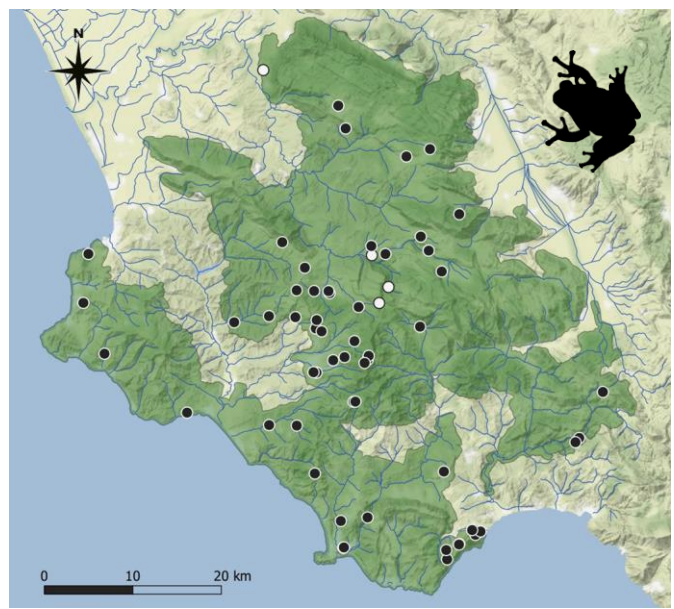
Bombina variegata



Bufo bufo



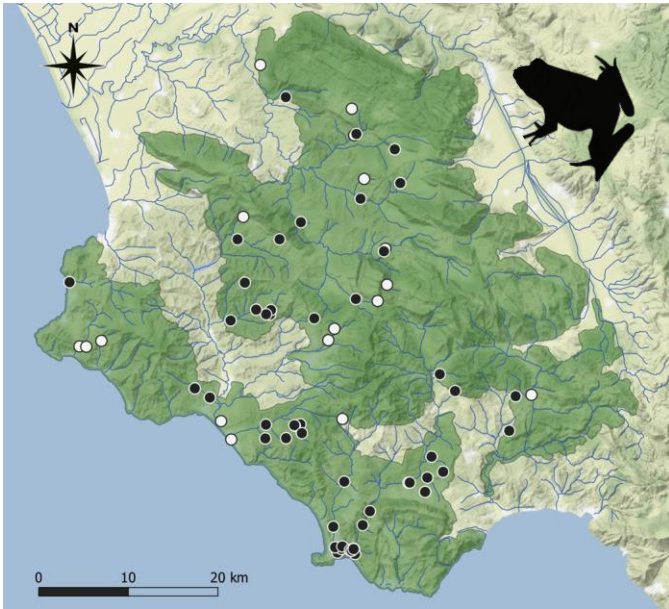
Bufotes viridis



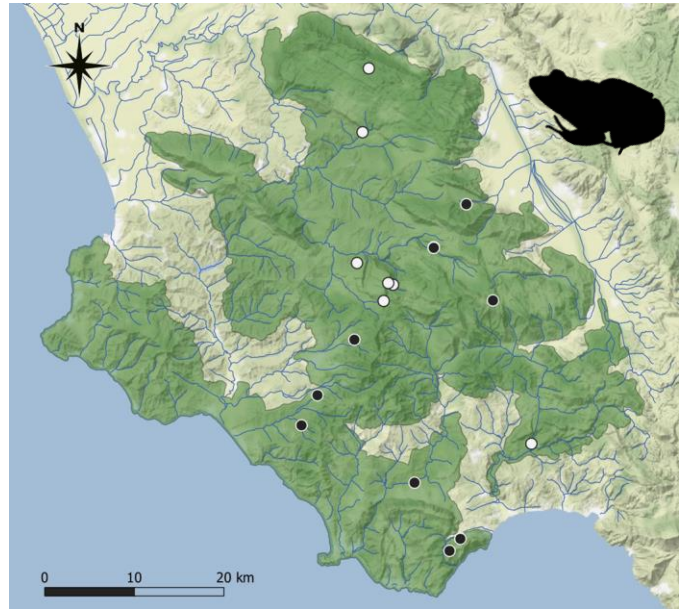
Hyla intermedia

Figure S2. Distribution of amphibians and reptiles in the “Cilento, Vallo di Diano e Alburni” National Park. White dots = records until year 2000; black dots: records post 2000.

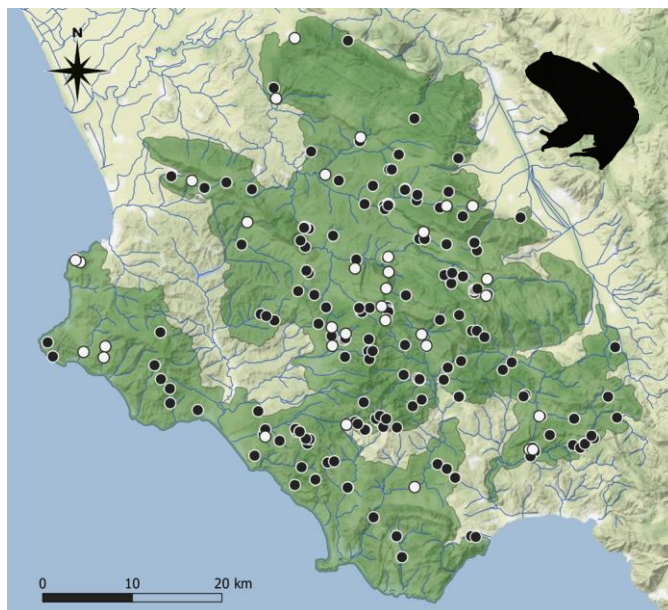
AMPHIBIA: frogs



Pelophylax lessonae complex



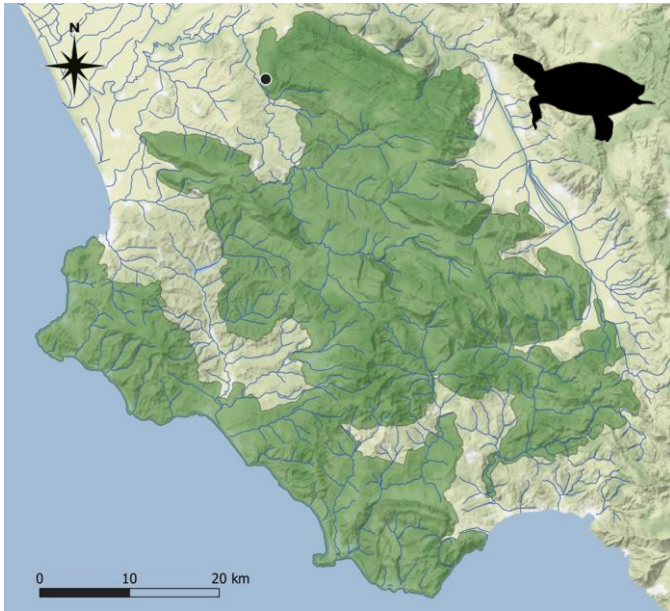
Rana dalmatina



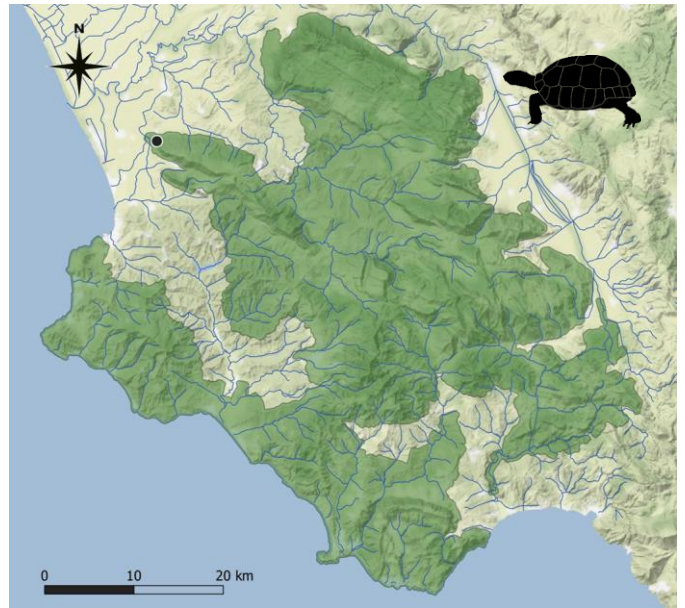
Rana italica

Figure S2. Distribution of amphibians and reptiles in the “Cilento, Vallo di Diano e Alburni” National Park. White dots = records until year 2000; black dots: records post 2000.

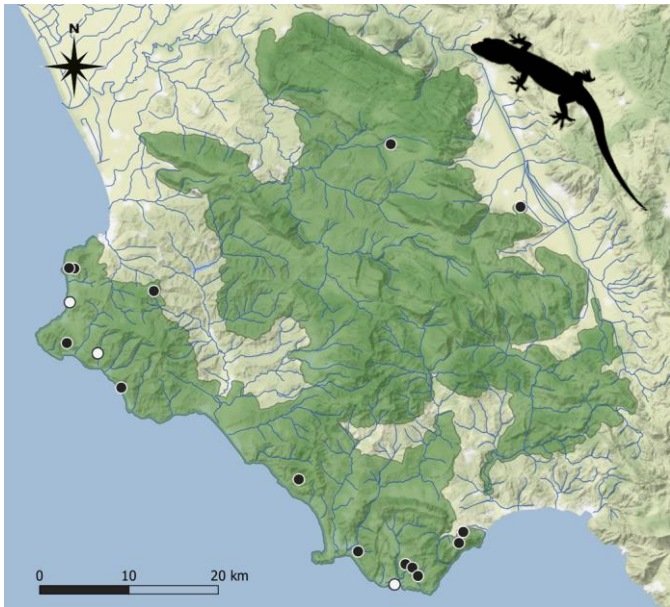
REPTILIA: turtles and geckos



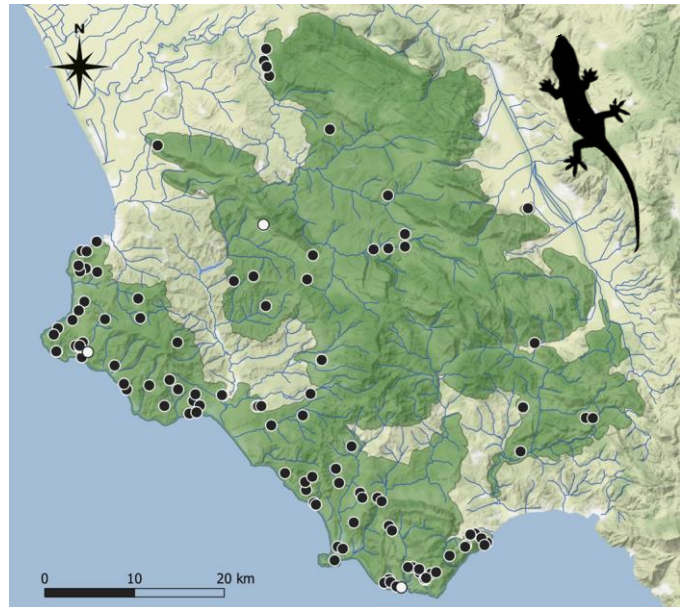
Emys orbicularis



Testudo hermanni



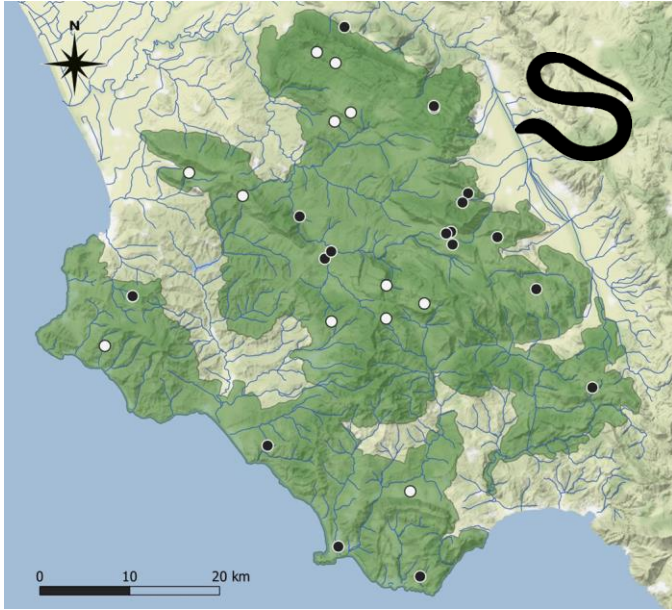
Hemidactylus turcicus



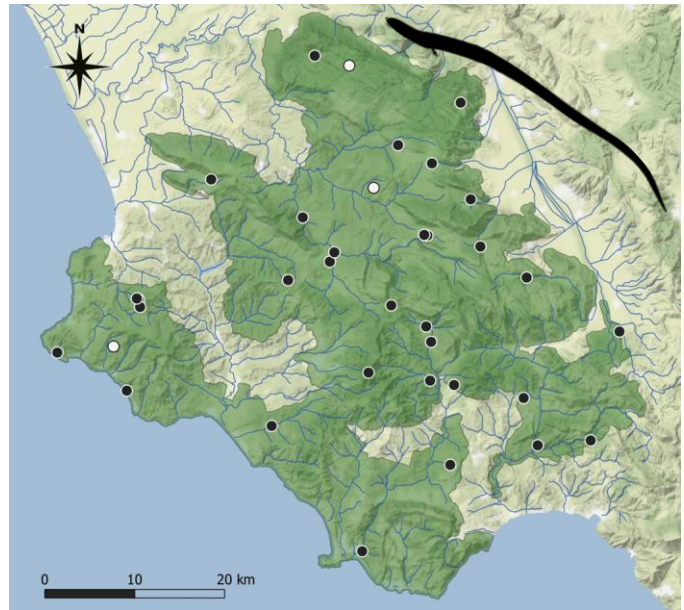
Tarentola mauritanica

Figure S2. Distribution of amphibians and reptiles in the “Cilento, Vallo di Diano e Alburni” National Park. White dots = records until year 2000; black dots: records post 2000.

REPTILIA: slow-worms and skinks



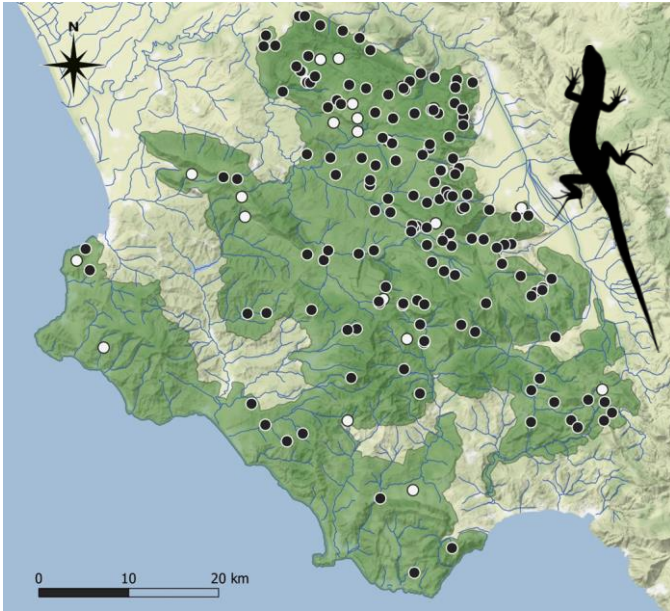
Anguis veronensis



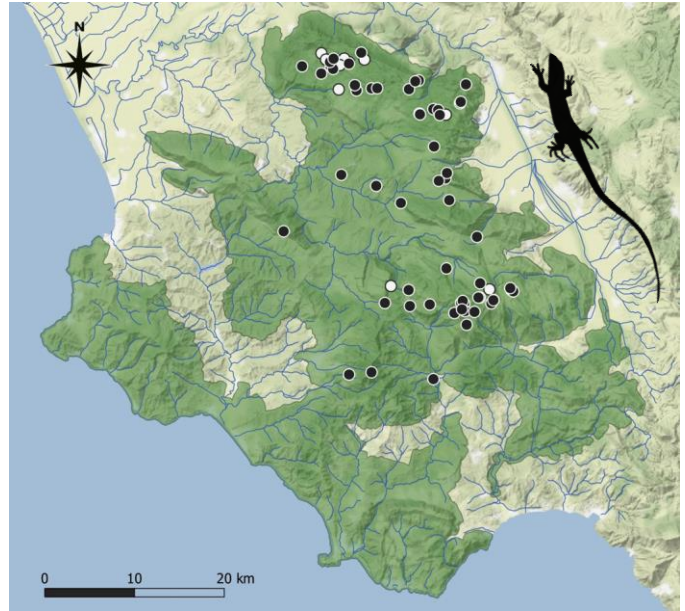
Chalcides chalcides

Figure S2. Distribution of amphibians and reptiles in the “Cilento, Vallo di Diano e Alburni” National Park. White dots = records before year 2000; black dots: records post 2000.

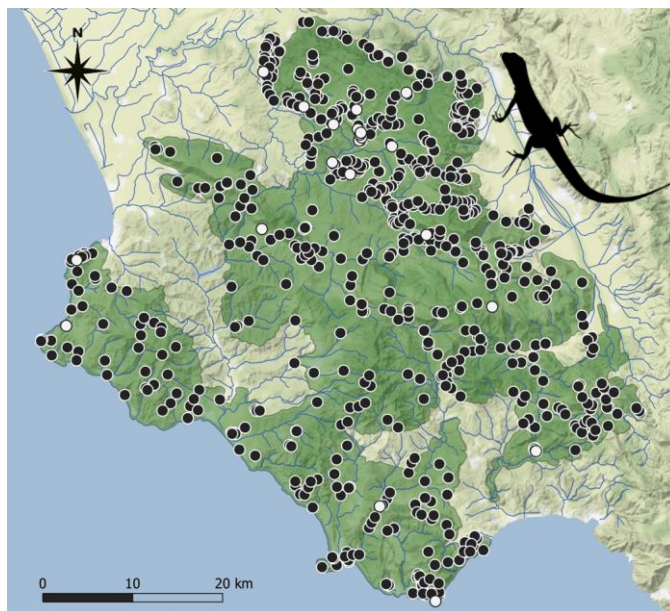
REPTILIA: lizards



Lacerta bilineata



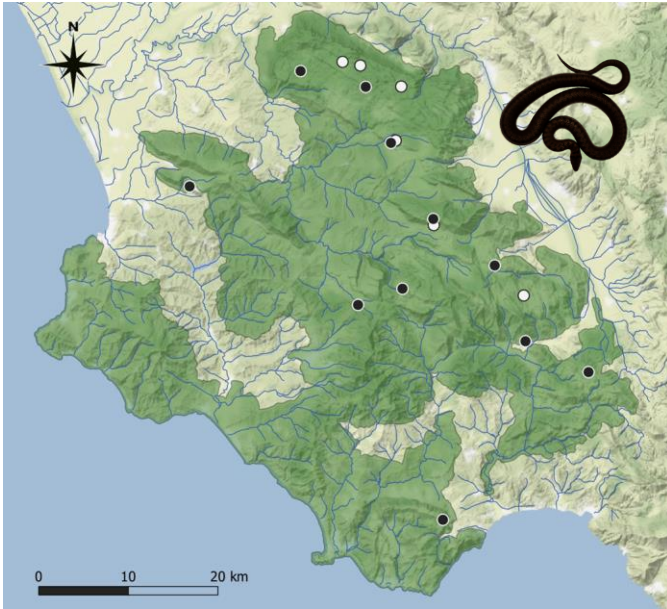
Podarcis muralis



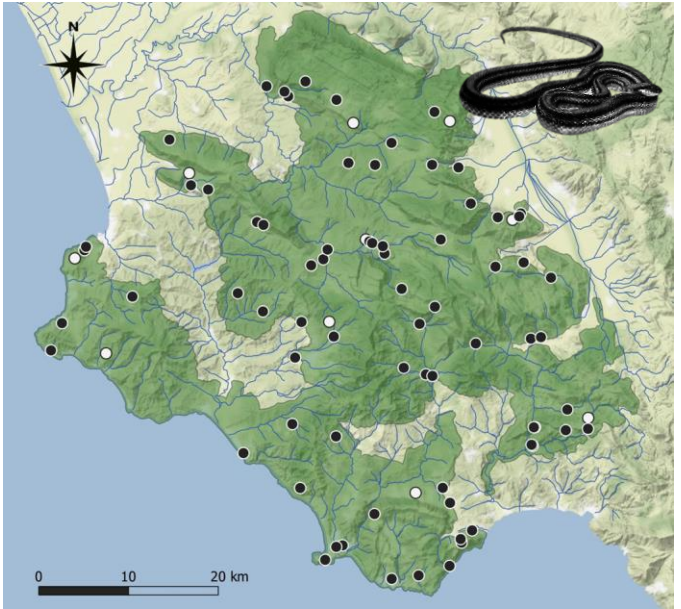
Podarcis siculus

Figure S2. Distribution of amphibians and reptiles in the “Cilento, Vallo di Diano e Alburni” National Park. White dots = records until year 2000; black dots: records post 2000.

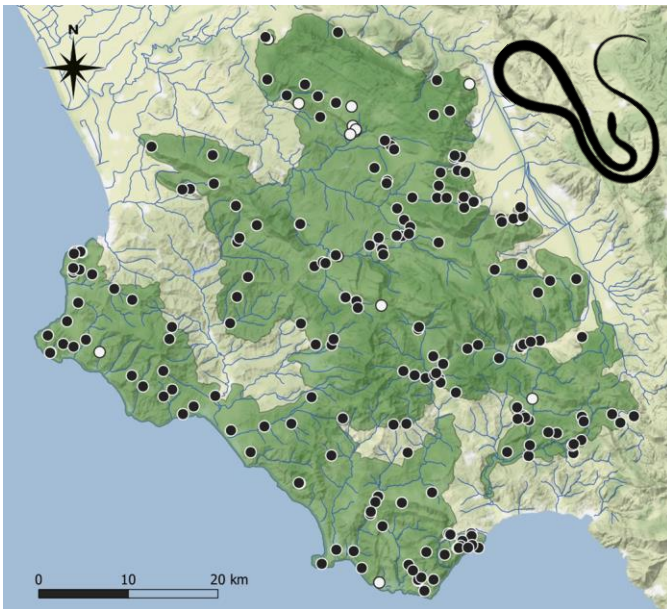
REPTILIA: snakes - colubrids



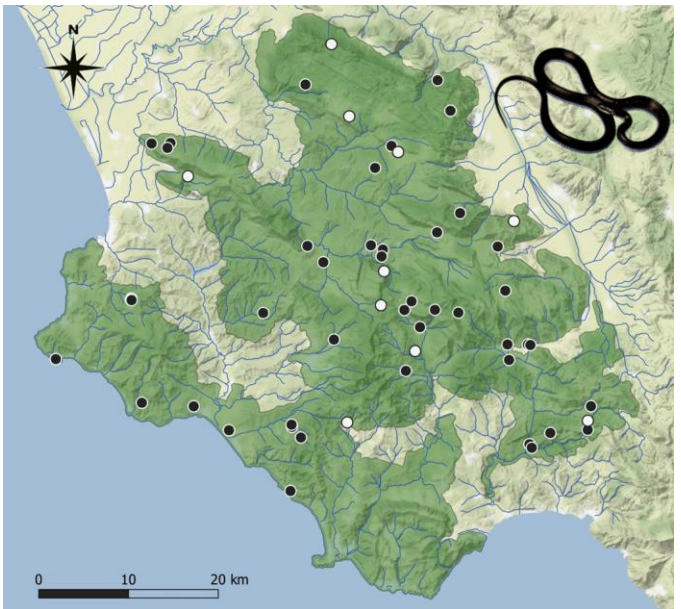
Coronella austriaca



Elaphe quatuorlineata



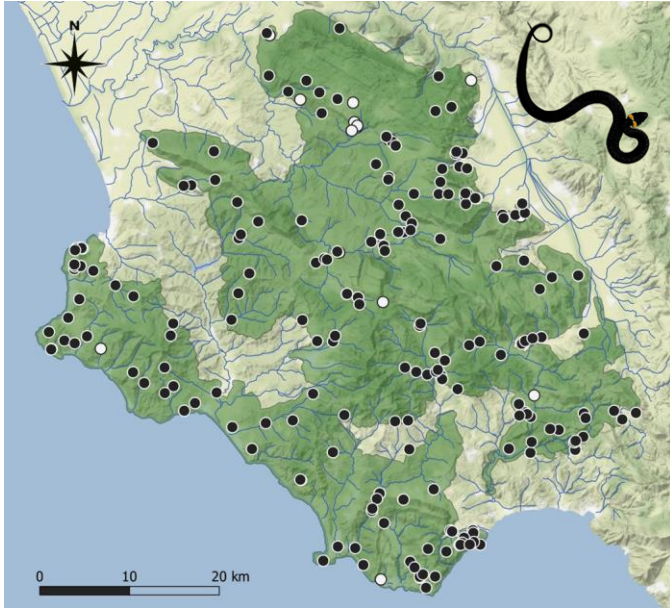
Hierophis viridiflavus



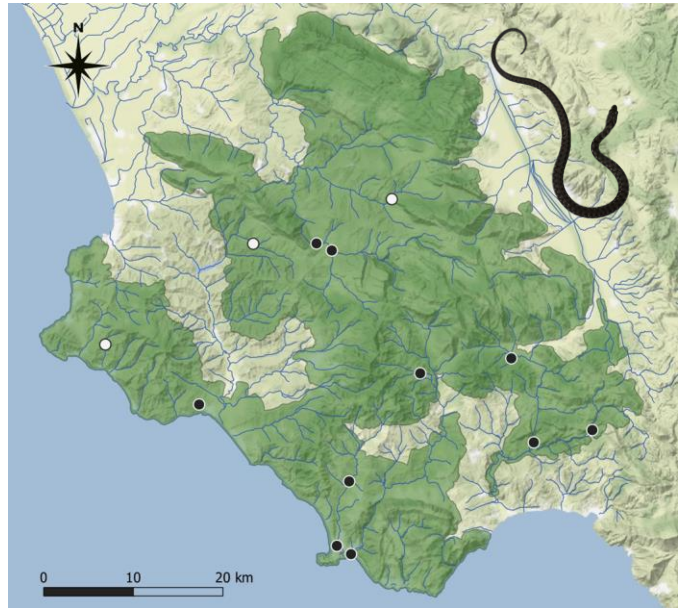
Zamenis lineatus

Figure S2. Distribution of amphibians and reptiles in the “Cilento, Vallo di Diano e Alburni” National Park. White dots = records until year 2000; black dots: records post 2000.

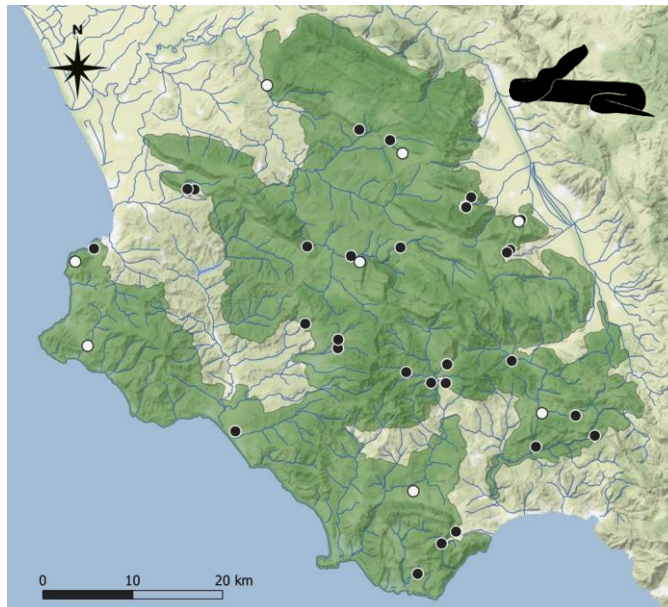
REPTILIA: snakes - water snakes and vipers



Natrix helvetica



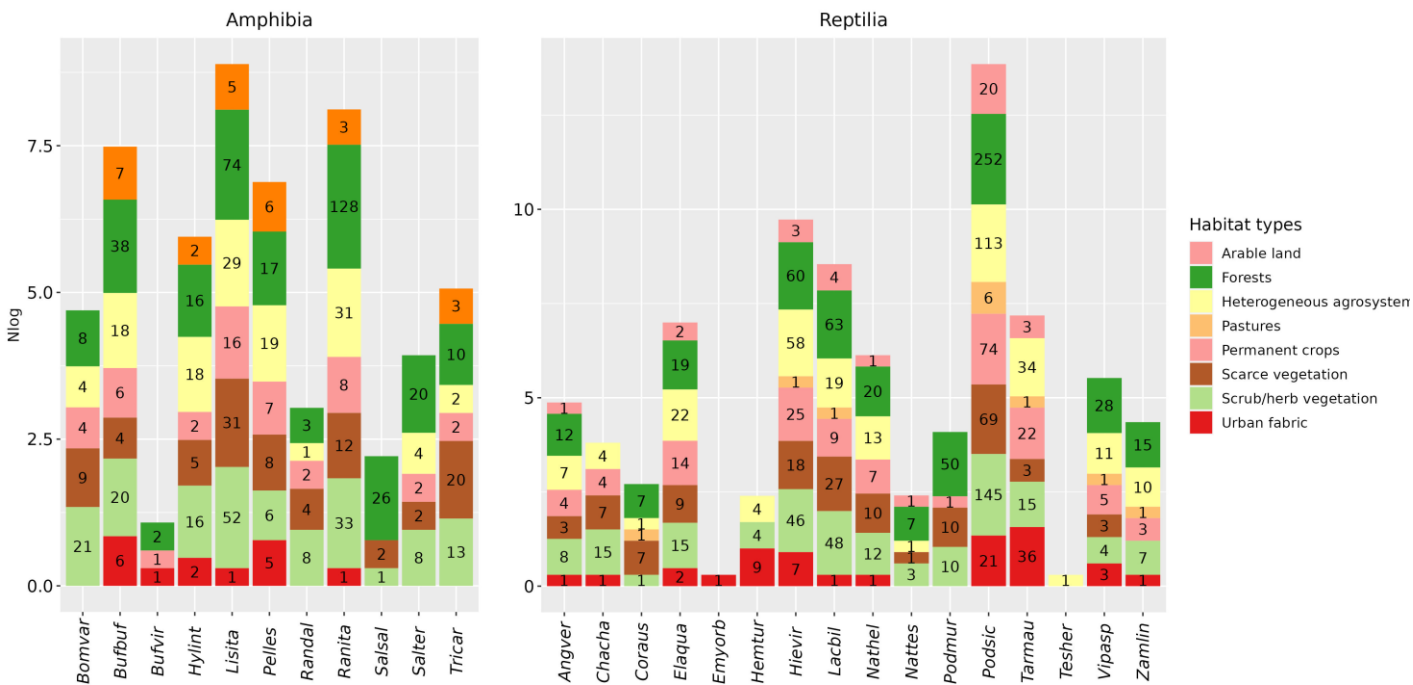
Natrix tessellata



Vipera aspis

Figure S3. Occurrence in the habitat types (Corine Land Cover level 2) of amphibians and reptiles in the “Cilento, Vallo di Diano e Alburni” National Park. The number of species records in each habitat type are showed in the respective bar. Species abbreviation as in Tab. 2 of the article.

Terrestrial habitat types



Aquatic habitat types

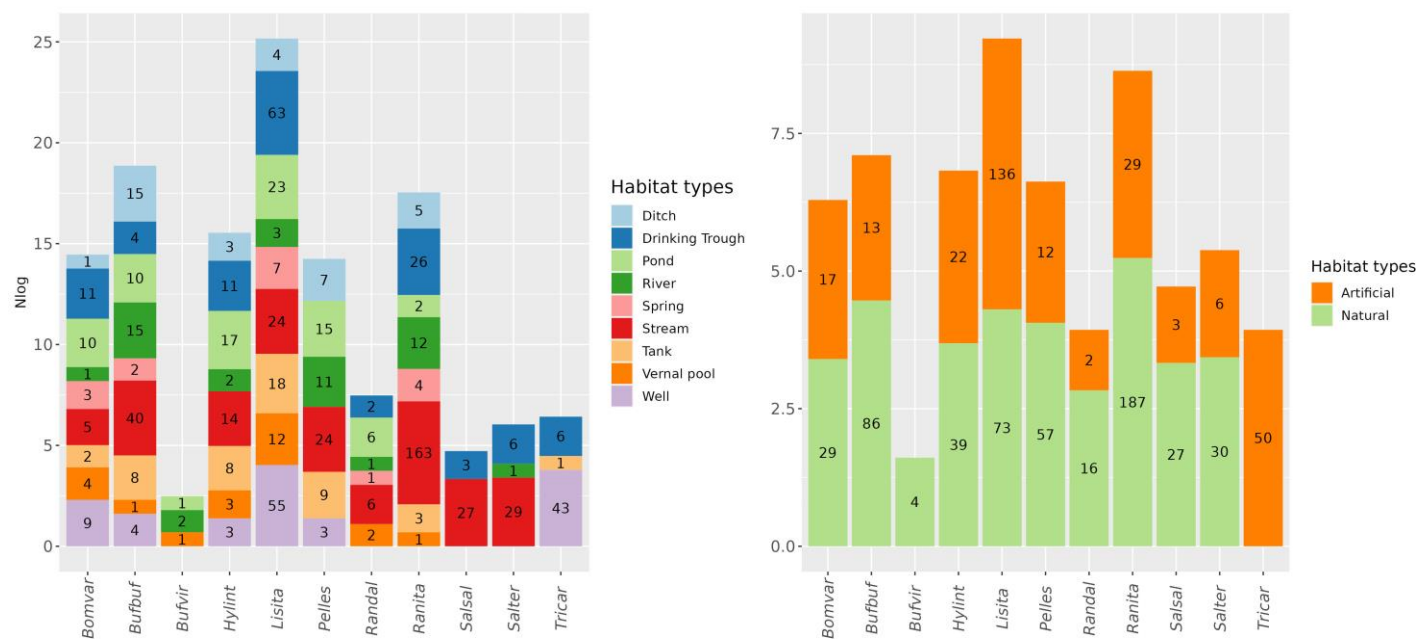


Figure S4. Artificial aquatic site alteration due to rural abandonment. On the upper, a breeding site of *Salamandrina terdigitata*, on the low a breeding site of *Lissotriton italicus* and *Hyla intermedia*

year 2008



year 2022

